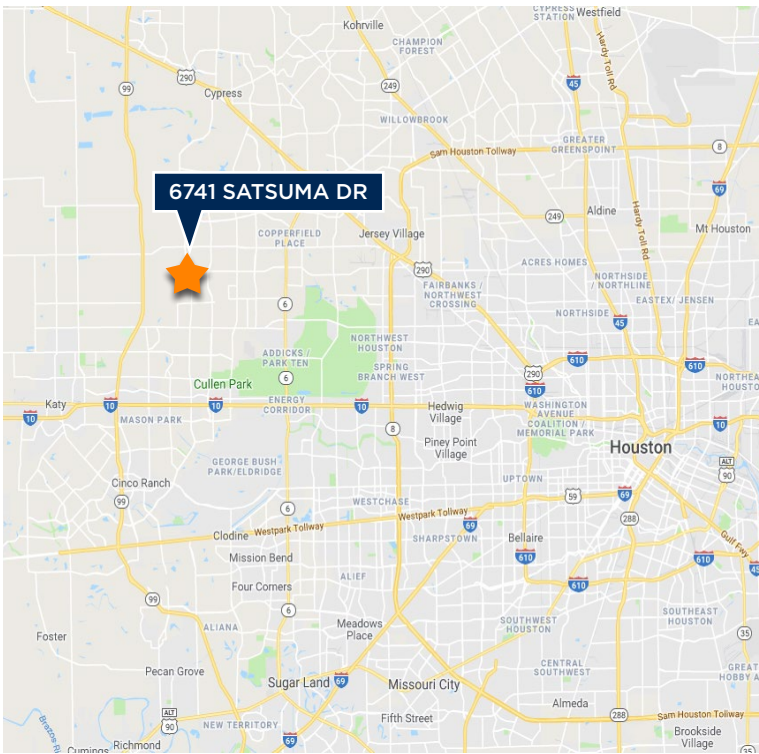


FOR LEASE INDUSTRIAL

6741 SATSUMA DR, SUITE A | HOUSTON, TEXAS 77041



SUITE A (AVAILABLE 1/1/2022)

Total RBA:	18,700 SF (5,000 SF Office)
Power:	3 Phase Heavy
Land Area:	- 10,000 SF partially stabilized for Truck Parking, Equipment Storage or Laydown Yard - 1 Acre of additional yard space if needed
Roof:	Replaced in 2017

WAREHOUSE INFORMATION:

- 15,200 SF Warehouse; includes unattached storage warehouse
- 1,500 SF Warehouse Available; currently used as storage for equipment
- 18'-24' Clear Height
- Fully Insulated
- 3 Phase Heavy Power (480v)
- (8) Grade Level Doors
- (2) Oversized Grade Level Doors
- Mezzanine Warehouse Managers Office
- Halogen Lighting
- 1-2 Restrooms

OFFICE INFORMATION:

- (8) Executive Offices
- Receptionist Area
- Breakroom/Kitchen
- Copy Room
- Conference Room
- Lab Space
- Multiple Co-Working Spaces / Bullpen Space
- (3) Restrooms
- Renovated in 2020



BRANDON WUNTCH

D / 713.275.3784
M / 713.882.1739
bwuntch@fritscheanderson.com

WINSTON WEGNER

D / 713.275.3813
M / 713.249.8330
wwegner@fritscheanderson.com

DYLAN COLEMAN

D / 713.275.3785
M / 409.673.7210
dcoleman@fritscheanderson.com

FOR LEASE INDUSTRIAL

6741 SATSUMA DR, SUITE A | HOUSTON, TEXAS 77041



BRANDON WUNTCH

D / 713.275.3784
M / 713.882.1739
bwuntch@fritscheanderson.com

WINSTON WEGNER

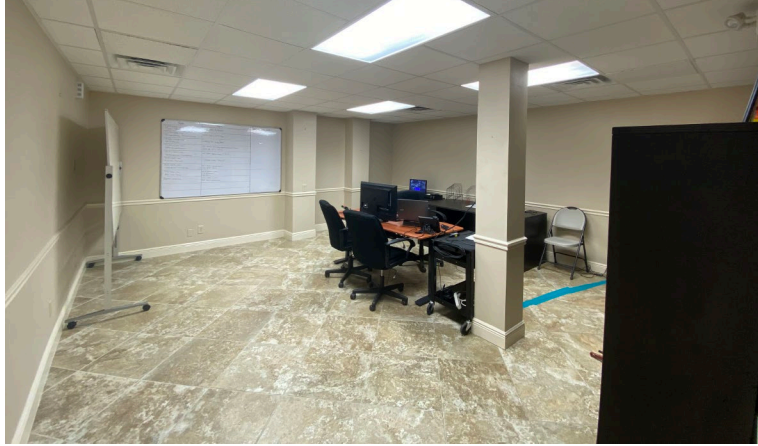
D / 713.275.3813
M / 713.249.8330
wwegner@fritscheanderson.com

DYLAN COLEMAN

D / 713.275.3785
M / 409.673.7210
dcoleman@fritscheanderson.com

FOR LEASE INDUSTRIAL

6741 SATSUMA DR, SUITE A | HOUSTON, TEXAS 77041



BRANDON WUNTCH

D / 713.275.3784
M / 713.882.1739
bwuntch@fritscheanderson.com

WINSTON WEGNER

D / 713.275.3813
M / 713.249.8330
wwegner@fritscheanderson.com

DYLAN COLEMAN

D / 713.275.3785
M / 409.673.7210
dcoleman@fritscheanderson.com

FOR LEASE INDUSTRIAL

6741 SATSUMA DR, SUITE A | HOUSTON, TEXAS 77041



BRANDON WUNTCH

D / 713.275.3784
M / 713.882.1739
bwuntch@fritscheanderson.com

WINSTON WEGNER

D / 713.275.3813
M / 713.249.8330
wwegner@fritscheanderson.com

DYLAN COLEMAN

D / 713.275.3785
M / 409.673.7210
dcoleman@fritscheanderson.com